

- Key:**
- Order Limits
 - Other Developments
 - Air Quality - Construction - 500 m from Order Limits
 - Air Quality - Operation - 15 km from Order Limits

Infrastructure Planning (Applications:
Prescribed Forms and Procedure)
Regulations 2009 - Regulation 5(2)(a)

Mapping reproduced by permission of
Ordnance Survey on behalf of HMSO.
Contains OS data © Crown Copyright and
database right 2020



PROJECT TITLE
**DRAX BECCS
DCO**

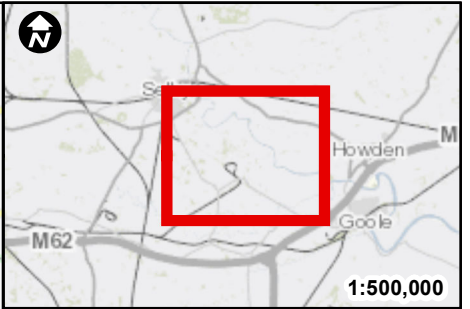
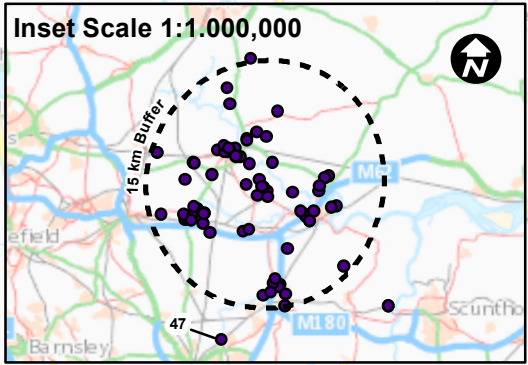
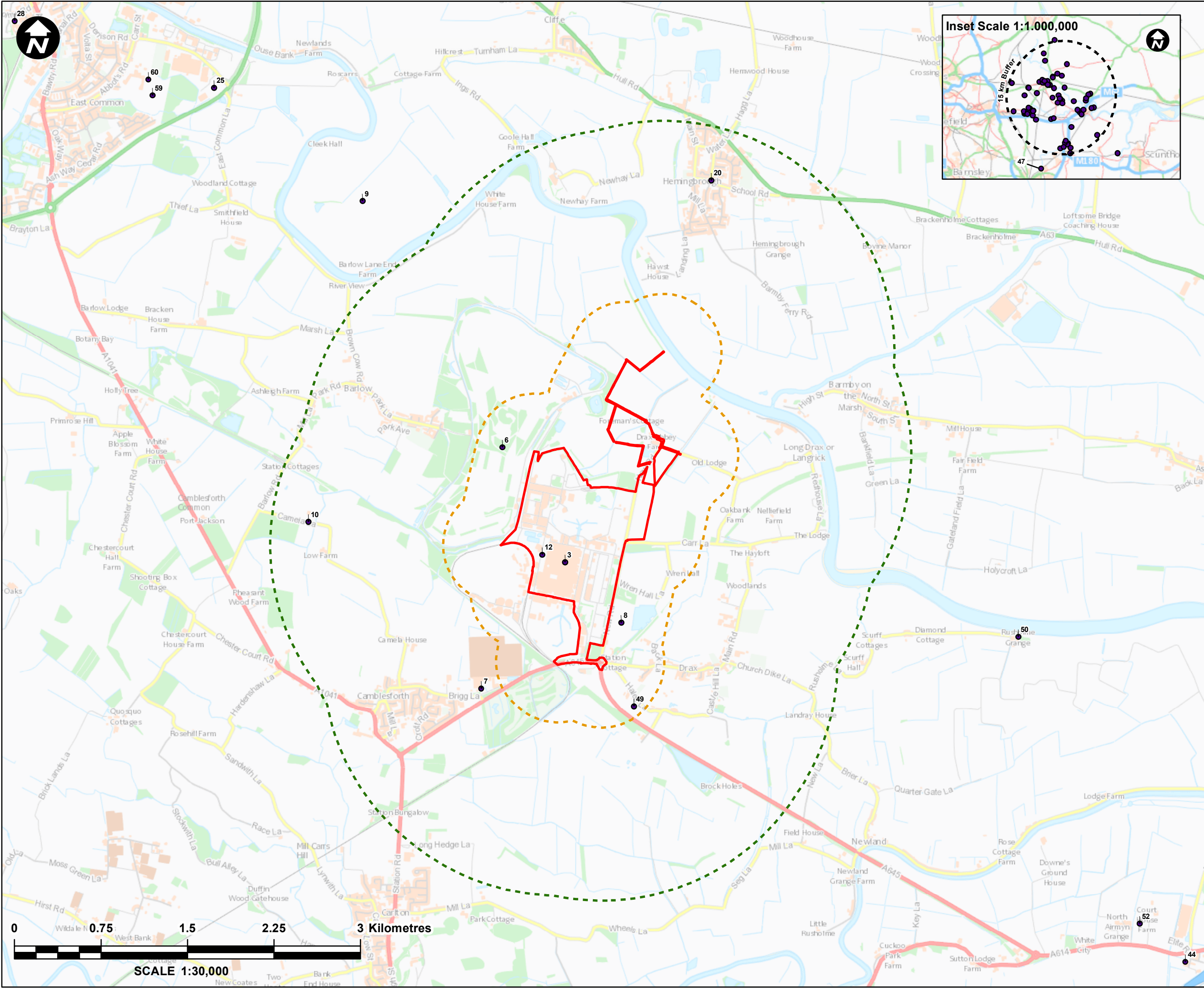
DRAWING TITLE
**FIGURE 18.1:
SHORT LIST OF 'OTHER DEVELOPMENTS'
CONSIDERED WITHIN THE CUMULATIVE
IMPACTS ASSESSMENT
SHEET OF 1 OF 7**

DRAWING STATUS
FOR ISSUE

| DRAWN | CHECKED | APPROVED | AUTHORISED |
|-------|---------|----------|------------|
| LH | BS | LI | BS |

| SCALE @ A3 SIZE | DATE | REVISION |
|-----------------|------------|----------|
| 1:125,000 | 26/04/2022 | P01 |

DRAWING NUMBER
EN010120-PA-ES-6.2.18.1-Sheet1



- Key:**
- Order Limits
 - Other Developments
 - Noise and Vibration - Construction - 500 m from Order Limits
 - Noise and Vibration - Operation - 2 km from Order Limits

Infrastructure Planning (Applications: Prescribed Forms and Procedure) Regulations 2009 - Regulation 5(2)(a)

Mapping reproduced by permission of Ordnance Survey on behalf of HMSO. Contains OS data © Crown Copyright and database right 2020



PROJECT TITLE
DRAX BECCS DCO

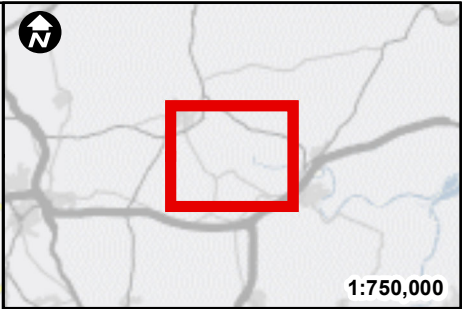
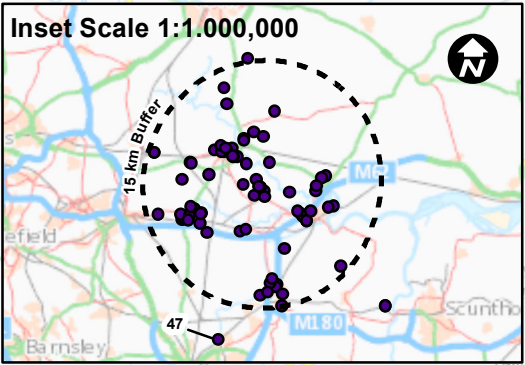
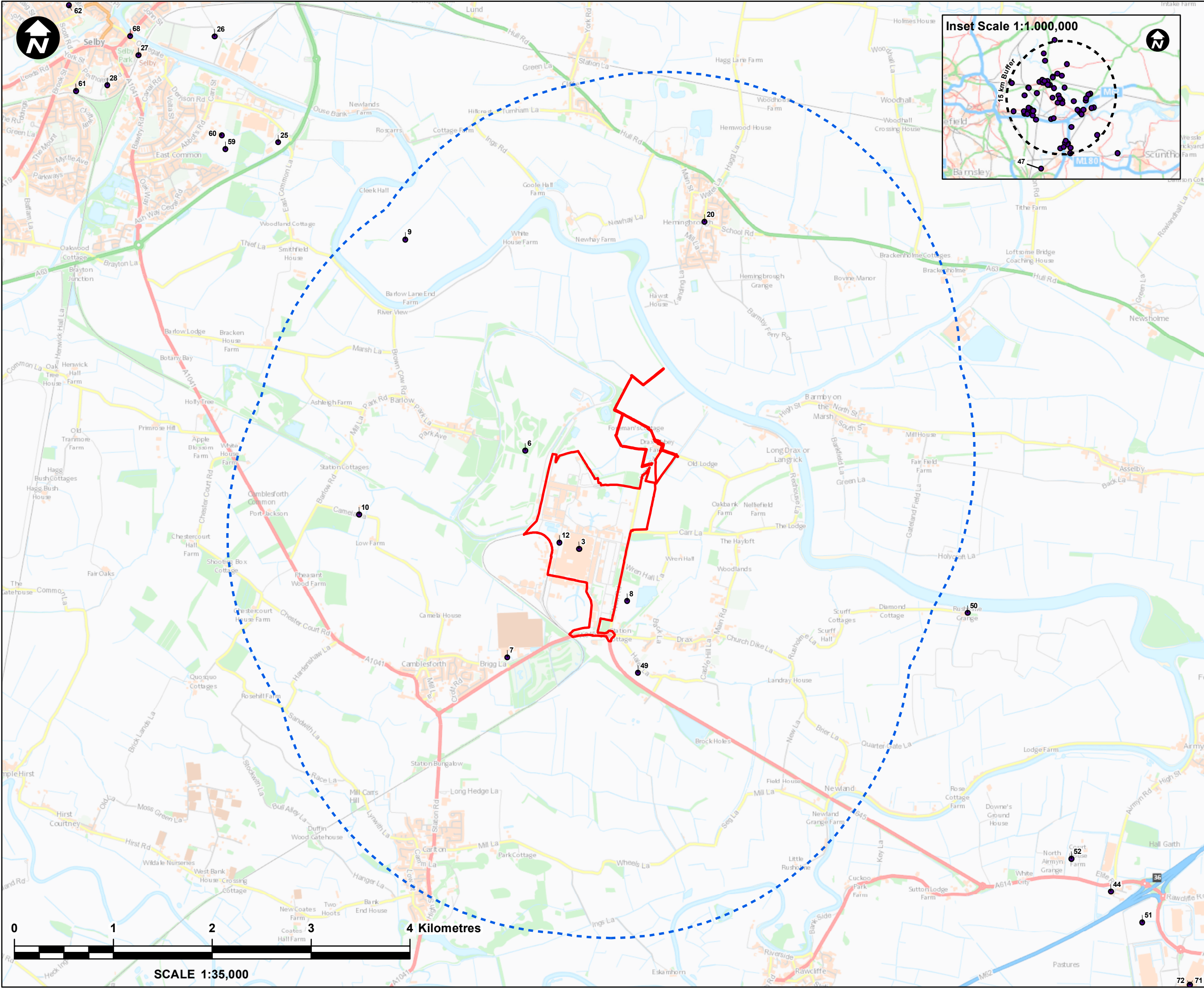
DRAWING TITLE
**FIGURE 18.1:
SHORT LIST OF 'OTHER DEVELOPMENTS'
CONSIDERED WITHIN THE CUMULATIVE
IMPACTS ASSESSMENT
SHEET OF 2 OF 7**

DRAWING STATUS
FOR ISSUE

| DRAWN | CHECKED | APPROVED | AUTHORISED |
|-------|---------|----------|------------|
| LH | BS | LI | BS |

| SCALE @ A3 SIZE | DATE | REVISION |
|-----------------|------------|----------|
| 1:30,000 | 26/04/2022 | P01 |

DRAWING NUMBER
EN010120-PA-ES-6.2.18.1-Sheet2



- Key:**
- Order Limits
 - Other Developments
 - Landscape and Visual - 3 km from Order Limits

Infrastructure Planning (Applications:
Prescribed Forms and Procedure)
Regulations 2009 - Regulation 5(2)(a)

Mapping reproduced by permission of
Ordnance Survey on behalf of HMSO.
Contains OS data © Crown Copyright and
database right 2020



PROJECT TITLE

**DRAX BECCS
DCO**

DRAWING TITLE

**FIGURE 18.1:
SHORT LIST OF 'OTHER DEVELOPMENTS'
CONSIDERED WITHIN THE CUMULATIVE
IMPACTS ASSESSMENT
SHEET OF 4 OF 7**

DRAWING STATUS

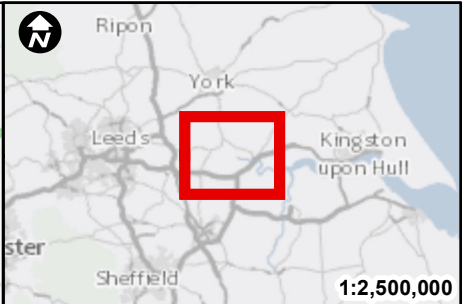
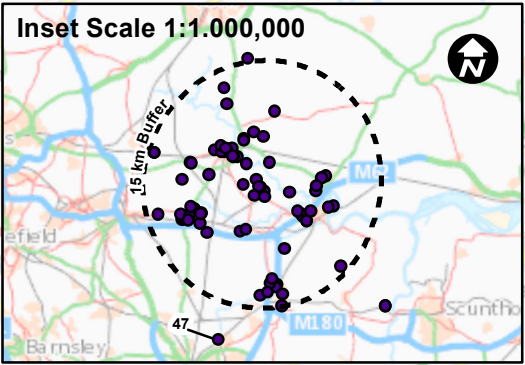
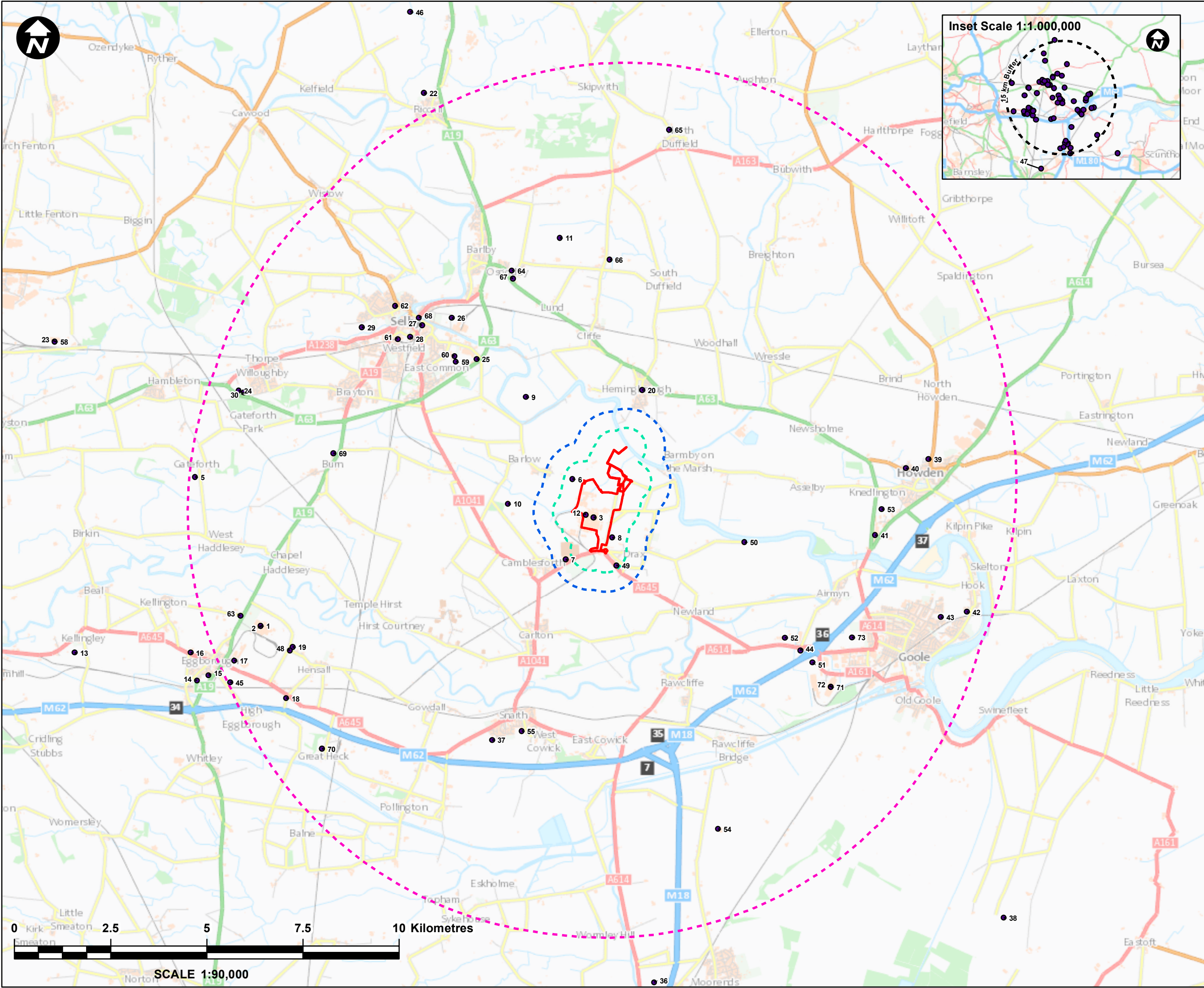
FOR ISSUE

| DRAWN | CHECKED | APPROVED | AUTHORISED |
|-------|---------|----------|------------|
| LH | BS | LI | BS |

| SCALE @ A3 SIZE | DATE | REVISION |
|-----------------|------------|----------|
| 1:35,000 | 26/04/2022 | P01 |

DRAWING NUMBER

EN010120-PA-ES-6.2.18.1-Sheet4



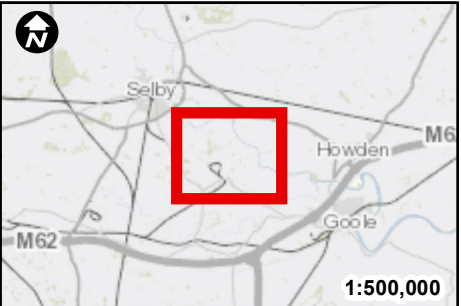
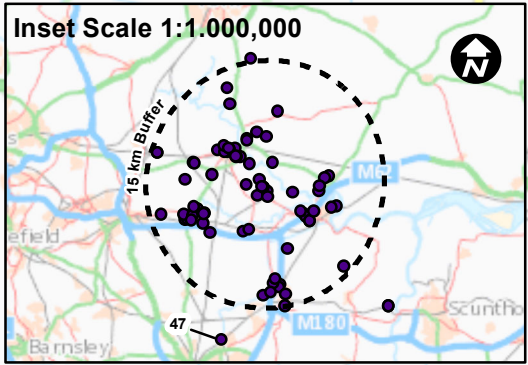
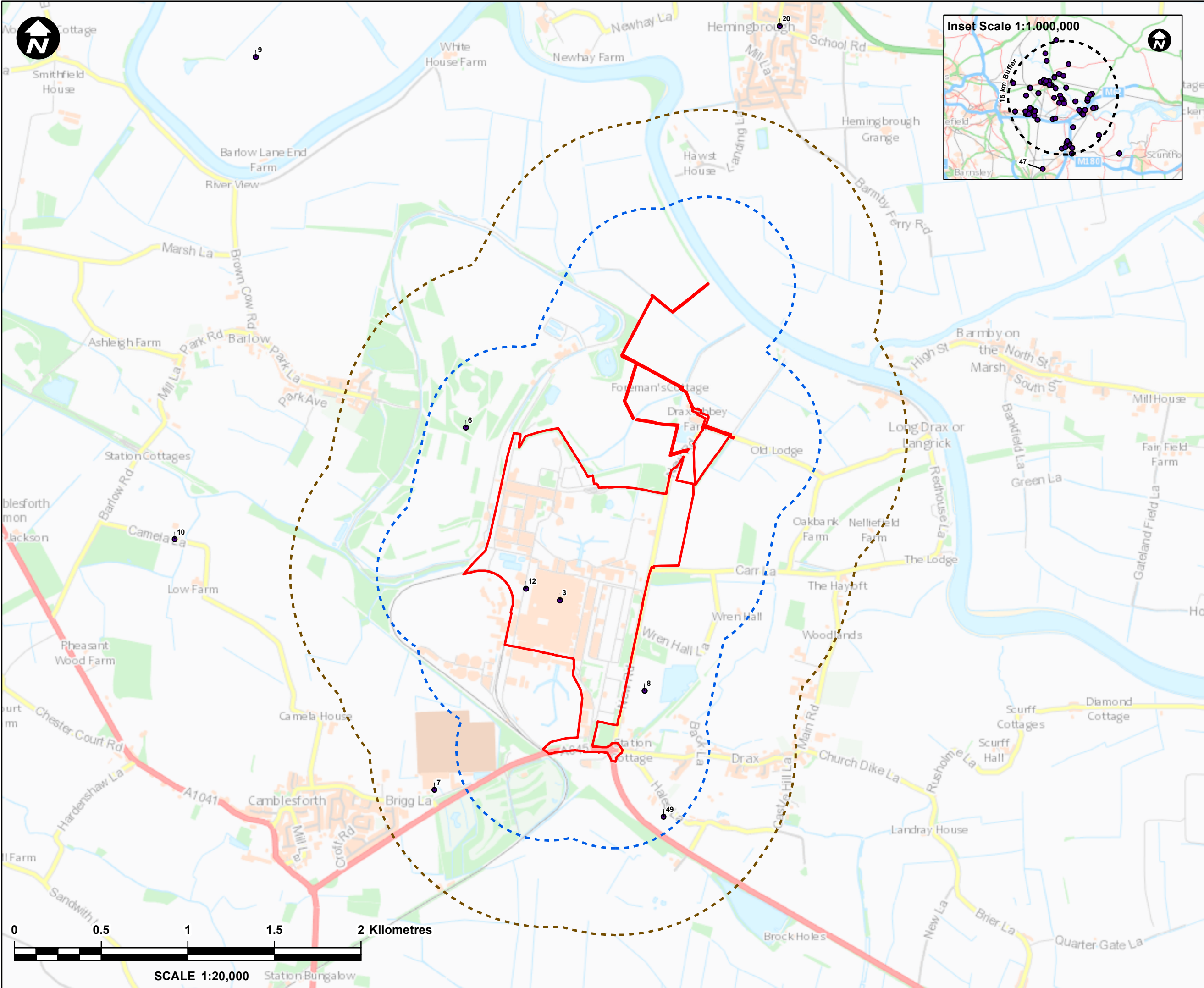
- Key:**
- Order Limits
 - Other Developments
 - Heritage - Non-designated
 - Heritage Assets - 500 m from Order Limits
 - Heritage - Designated Heritage Assets of Low Value - 1 km from Order Limits
 - Heritage - Designated Heritage Assets of Medium to High Value - 10 km from Order Limits

Infrastructure Planning (Applications: Prescribed Forms and Procedure) Regulations 2009 - Regulation 5(2)(a)

Mapping reproduced by permission of Ordnance Survey on behalf of HMSO. Contains OS data © Crown Copyright and database right 2020



| | | | |
|---|---------|------------|------------|
| PROJECT TITLE | | | |
| DRAX BECCS DCO | | | |
| DRAWING TITLE | | | |
| FIGURE 18.1: SHORT LIST OF 'OTHER DEVELOPMENTS' CONSIDERED WITHIN THE CUMULATIVE IMPACTS ASSESSMENT SHEET OF 5 OF 7 | | | |
| DRAWING STATUS | | | |
| FOR ISSUE | | | |
| DRAWN | CHECKED | APPROVED | AUTHORISED |
| LH | BS | LI | BS |
| SCALE @ A3 SIZE | | DATE | REVISION |
| 1:90,000 | | 26/04/2022 | P01 |
| DRAWING NUMBER | | | |
| EN010120-PA-ES-6.2.18.1-Sheet5 | | | |



- Key:**
- Order Limits
 - Other Developments
 - Water Environment - Direct
 - Impacts to Surface Water Features - 500 m from Order Limits
 - Water Environment - Direct
 - Impacts to Surface Water Features - 1 km from Order Limits

Infrastructure Planning (Applications: Prescribed Forms and Procedure) Regulations 2009 - Regulation 5(2)(a)

Mapping reproduced by permission of Ordnance Survey on behalf of HMSO. Contains OS data © Crown Copyright and database right 2020



PROJECT TITLE
DRAX BECCS DCO

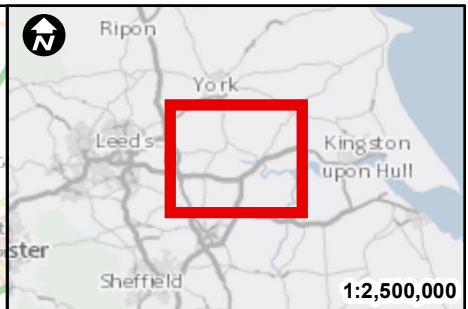
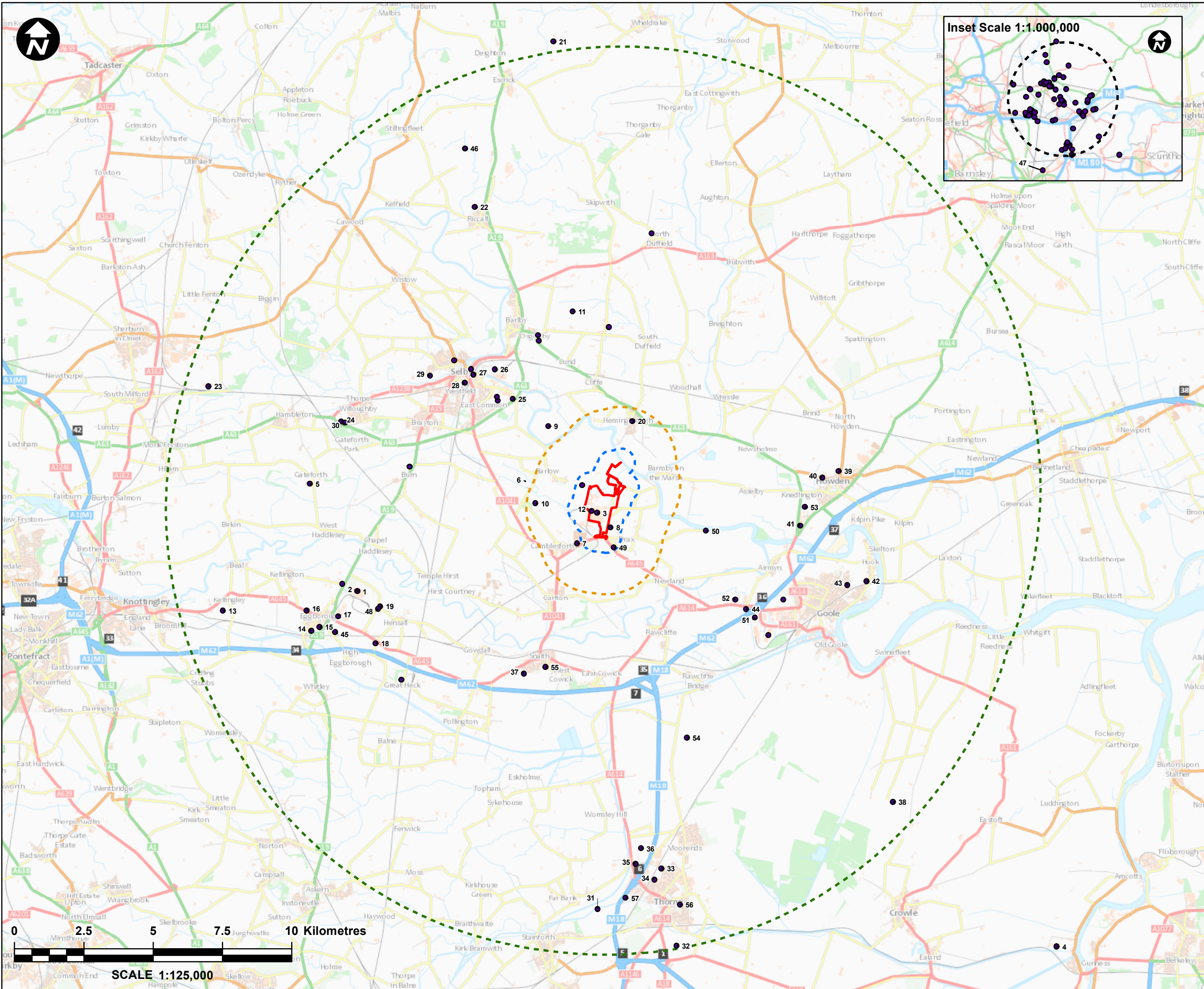
DRAWING TITLE
FIGURE 18.1:
SHORT LIST OF 'OTHER DEVELOPMENTS'
CONSIDERED WITHIN THE CUMULATIVE
IMPACTS ASSESSMENT
SHEET OF 6 OF 7

DRAWING STATUS
FOR ISSUE

| DRAWN | CHECKED | APPROVED | AUTHORISED |
|-------|---------|----------|------------|
| LH | BS | LI | BS |

| SCALE @ A3 SIZE | DATE | REVISION |
|-----------------|------------|----------|
| 1:20,000 | 26/04/2022 | P01 |

DRAWING NUMBER
EN010120-PA-ES-6.2.18.1-Sheet7



- Key:**
- Order Limits
 - Other Developments
 - Population and Human Health - Disruption to Local Businesses - 500 m from Order Limits
 - Population and Human Health - Demand on Accommodation and Community Facilities - 2 km from Order Limits
 - Population and Human Health - Employment Generation - 15 km from Order Limits

Infrastructure Planning (Applications: Prescribed Forms and Procedure) Regulations 2009 - Regulation 5(2)(a)

Mapping reproduced by permission of Ordnance Survey on behalf of HMSO. Contains OS data © Crown Copyright and database right 2020



PROJECT TITLE
DRAX BECCS DCO

DRAWING TITLE
**FIGURE 18.1:
SHORT LIST OF 'OTHER DEVELOPMENTS'
CONSIDERED WITHIN THE CUMULATIVE
IMPACTS ASSESSMENT
SHEET OF 7 OF 7**

DRAWING STATUS
FOR ISSUE

| DRAWN | CHECKED | APPROVED | AUTHORISED |
|-------|---------|----------|------------|
| LH | BS | LI | BS |

| SCALE @ A3 SIZE | DATE | REVISION |
|-----------------|------------|----------|
| 1:125,000 | 26/04/2022 | P01 |

DRAWING NUMBER
EN010120-PA-ES-6.2.18.1-Sheet8